



Motion is  
**our business**





114 Calea Victoriei, District 1,  
010092, Bucharest, Romania

Phone: +40 21 317 30 90

Fax: +40 2131730 91

office@GRAMPET.ro

www.GRAMPET.ro

<b>01</b>	<b>GRAMPET Group</b>	<b>4</b>
<b>02</b>	<b>Freight Transport Companies</b>	<b>6</b>
	Grup Feroviar Român	6
	Bulgarian Railway Company	8
	Train Hungary	10
	GRAMPET Cargo Austria	12
	Eurorail Logistics Serbia	13
	GRAMPET Rail Cargo	14
	Logistică Feroviară	16
<b>03</b>	<b>Logistics Companies</b>	<b>18</b>
	GP Logistics	18
	GP Intermodal	19
	Eurorail Logistics Germany	20
	Eurorail Company Moldova	20
	Rolling Stock Company	22
<b>04</b>	<b>Locomotives &amp; Wagons Construction &amp; Repairs</b>	<b>24</b>
	Electroputere VFU Pașcani	24
	Reva Simeria	26
	GRAMPET Debreceni Vagongyár Hungary	28
	Reloc Craiova	30
<b>05</b>	<b>IT Solutions</b>	<b>32</b>
	Institutul pentru Tehnică de Calcul	32
<b>06</b>	<b>Energy</b>	<b>34</b>
	ROSERV Green Energy	34





# 01 GRAMPET Group

## GRAMPET Group is the first European company that joined the Trans-Caspian International Transport Route.

GRAMPET Group is the largest private rail freight and logistics holding in Romania and in the South Eastern Europe region, providing a wide range of products and services in the railway sector, from integrated transport to logistics services, manufacturing of state-of-the-art locomotives, wagons and other rolling stock parts as well as rolling stock modernization and leasing services.

GRAMPET Group holds Romania's leading private rail freight operator in its portfolio, Grup Feroviar Român, and has operations in six countries across the region: Hungary, Bulgaria, Germany, Austria, Serbia and the Republic of Moldova.

The Group offers logistics services and freight transport solutions on routes connecting the Black Sea to the Adriatic Sea and the North Sea. GRAMPET Group's RELOC - Electroputere VFU Craiova manufactures Romania's newest heavy shunting and light line locomotive Terra Nova, equipped with Caterpillar engines. GRAMPET Group also owns one of the most modern plants in Europe, specialized in the construction and repair of freight and passenger carriages - Electroputere VFU Pașcani.

### | Key data

Group Sales 2022:  
**350 million EUR (consolidated)**

Group Employees:  
**7100**

Group Rolling Stock managed:  
**400 locomotives; 20,000 wagons**

Manufacturer of the diesel-hydraulic locomotive foreavy shunting and light line service TERRA NOVA, with a nominal power of 1260HP. The locomotive is entirely, designed and manufactured by RELOC - Electroputere VFU Craiova, together with the world heavy machinery champion Caterpillar, which delivers the two engines

### | Services

- Integrated services of freight railway transport
- Manufacture, repair and modernization of rolling stock
- Production of spare parts for the railway industry
- Rolling stock leasing services
- Freight transhipment
- Logistics services
- IT solutions to maximize efficiency of railway operators

### | Vision

We aim at setting new benchmarks in the rail industry in Central and South-Eastern Europe region through our efforts to develop customers' businesses, thus contributing to national economies welfare, local communities growth and people's well-being. We will connect businesses, people and ideas; we will share solutions and visions to make rail industry a key element of a sustainable development of the society.

### | History

GRAMPET was established in 1999, aiming to integrate all our businesses in the railway sector. Since then, the company has been growing every year, adding constant value to its services by integrating new companies into the group and expanding its portfolio of services.

**20**  
YEARS

**TAKING  
ROMANIAN KNOW-HOW  
ACROSS BORDERS  
SINCE 1999**

### | Mission

We deliver rail industry customers the tools they need for achieving performance and the solutions for their complex businesses. We are always forward looking, being prepared to adapt to the unexpected.

We always stay true to our promises, focusing primarily on the safety of the customers business and the well-being of our employees and partners.

### | The Values of GRAMPET Group

- **Quality** - We continuously invest in developing our products and services, in improving the expertise of our people and their skills.
- **Flexibility** - We are forward looking and able to adapt to the unexpected.
- **Safety** - We are aware of the responsibility involved by our mission. Therefore, we operate on the highest standards in railway industry.
- **Respect** - We are a reliable partner for our customers and a good friend of our employees.

### | Freight Transport Companies

- Grup Feroviar Român
- Bulgarian Railway Company
- Train Hungary
- GRAMPET Cargo Austria
- Eurorail Logistics Serbia
- GRAMPET Rail Cargo
- Logistică Feroviară

### | Logistics Companies

- Eurorail Logistics Germany
- Eurorail Company Moldova
- Rolling Stock Company

### | Locomotives & wagons constructions and repairs

- Electroputere VFU Pașcani
- Reva Simeria
- GRAMPET Debreceni Vagonyár Hungary
- Reloc Craiova

### | IT Solutions

- Institutul pentru Tehnică de Calcul

### | Energy

- ROSERV Green Energy





## 02 Grup Feroviar Român



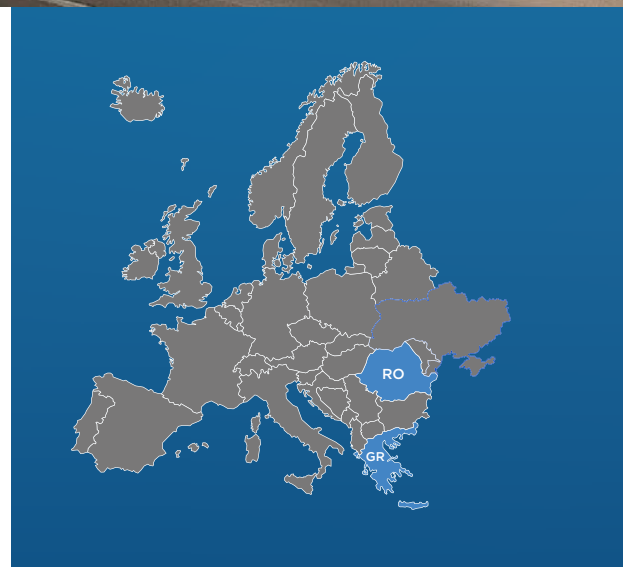
GRUP FERUVIAR ROMÂN  
member of Grampet Group  
ANYWHERE. ANYTIME. IN TIME

### In Romania since 2011 In Greece since 2020

Grup Feroviar Român, the flagship company of GRAMPET Group, is the largest private rail freight operator in Romania.

The company was founded in 2001 as a shunting operator and entered the railway transport market one year later. GFR extended its activity beyond the national borders providing 20% international freight transport services and 80% national transport services, being one of the most important players in this field.

The company imposed itself on the rail transport market by delivering the best value services.



### Services

GFR provides national and international railway transport services and related services according to customers' needs:

- Domestic and international freight transport services
- Railroad cars shunting services on industrial platforms
- Revision and maintenance of locomotives and freight wagons
- Freight wagon leasing
- Locomotive leasing
- Railway logistics

In Greece, Bulgaria (BRC), Hungary, Croatia, Slovenia (TH), Serbia (ERS) and Austria (GCA), GFR works together with other railway operators, its sister companies Bulgarian Railway Company (BRC), Train Hungary (TH), Eurorail Logistics Serbia (ERS) and GRAMPET Cargo Austria (GCA) to provide integrated services to its customers.

### Technical support

GFR together with its sister companies operates up to 16,500 freight cars and fuel tanks and 380 locomotives, hauling goods and fuels to hundreds of destinations. The activity is monitored and assessed by IT systems that process in real time the data regarding the transportation, in benefit of GFR customers.

### Market position

GFR is the largest private freight operator in Romania, ranking second after the state-owned company. GFR is a company with 100% private Romanian capital.

It is the national leader for transport of petroleum products.

GFR is one of the main players on the competitive rail freight market, has permanently extended its operations, to more diversified transports of goods: coal, aggregates, broken stone, slag, cement, clinker, containers, cereals and general freights.

### GFR is a member of

- UIC - since December 2003 (HQ in Paris, France)
- OCCF - since April 2004 (HQ in Warsaw, Poland)

### History

GFR was founded in 2001 as a shunting operator and entered the railway transport market in 2002. Between 2002 and 2005, GFR extended its market share in the field of petroleum products transportation. Starting 2006, GFR has provided international freight transport services. Two years later, GFR became the first private Romanian freight operator to collaborate with the Ukrainian National Railway Company. Since 2010, GFR operates crossing by all Romanian railway borders. In 2011 started the digitalization projects implementation for our railway activities systems.

Based on this excellent IT continuously work, GFR developed IT applications, so we are providing integrated services. From 2013 was ready for usage the first DHF, 585 horsepower, new brand locomotive, with a Cummins engine. In 2013, GFR was shortlisted in the "Railway Freight Operator of the Year" section at the European Railway Congress in London, and in 2014 was awarded "Romanian Brand of the Year" by The Economist "Intelligent Life" for performance and regional expansion. Up to 2017, due to GFR specialists engineer team, there succeeded technical project as: new Uagpps wagon type construction from Facpps wagons and the first DHC, 1217 horsepower by refitting the old DHC, 1250 horsepower, with a Cummins engine. In 2017 GFR is the first Balkan railway operator launching the electronic consignment note for local transports.

In 2018 GRAMPET Group – GFR became the first European company to join the Trans-Caspian International Transport Route. In 2019 GFR is the first electronic consignment notes for all major players in the Oil Products industry. In the same year, 2019 GRAMPET Group – GFR was named Regional Champion of the Year at the Emerging Europe Awards. Since 2020 GFR received the Single Safety Certificate from the European Union Agency for Railways (ERA) allowing it to operate in two countries, in Romania and Greece.

In 2021 GFR launches ETA Expert, the estimate time of arrival service for rail freight. This system is unique in Romania and Southeast Europe.

- CIT - since August 2004 (HQ in Bern, Switzerland)
- GCU (AWV) - since June 2006 (HQ in Brussels, Belgium)
- GER - since May 2007 (HQ in Brussels, Belgium)
- USER - since January 2012 (HQ in Bucharest, Romania)
- FIATA - since 2012 (HQ in Bern, Switzerland)
- PGV – since 2018 (HQ in Warsaw, Poland)

### Contract of collaboration

GFR has concluded contracts of collaboration:

- BDZ (the national rail freight operator in Bulgaria)
- ZS (the national railway company in Serbia)
- CFM (the national railway company in the Republic of Moldova)
- Bulgarian and Hungarian private rail freight operators
- PKP (Polish State Railways)
- ZSSK (Slovakian State Railways)
- HZ (Croatian State Railways)

### Our portfolio

- OMV Petrom
- GEFCO
- Liberty Steel
- Rompetrol Group
- Holcim
- GasPeco
- Lukoil
- ROMCIM
- CONPET

### Certifications and authorizations for Railway freight transport

- License for rail services performance no. 24

• Certification TUV Austria Romania EN ISO 9001:2015, EN ISO 14001:2015, ISO 45000:2018

• Certification OCSM AFER (Romanian Railway Authority) SR EN ISO 9001:2015, SR EN ISO 14001:2015, ISO 45000:2018

• Environmental Authorization no. 1/22.01.2014 – yearly updated

• Certification SCONRAIL AG as Entity in charge of maintenance of freight wagons no. CH/31/0218/7213

• The Single Safety Certificate European issued by the European Union Agency for Railways (ERA) for allowing it to operate in Romania and Greece – ID EU1020210087



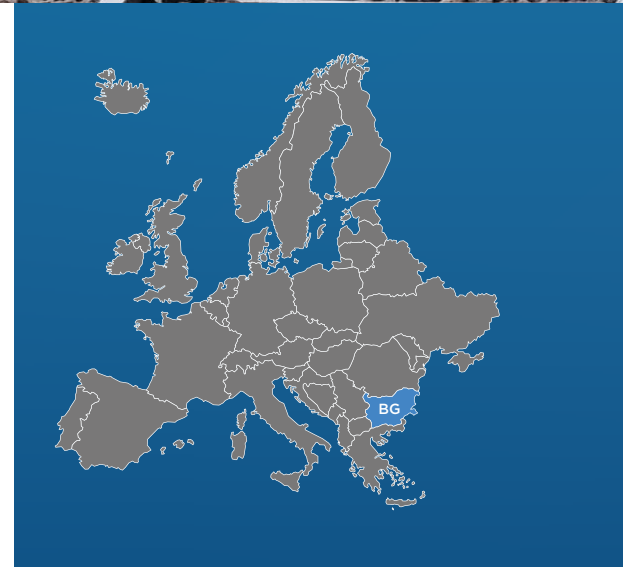
## 02 Bulgarian Railway Company



Bulgarian Railway Company EAD, member of GRAMPET Group, performs rail freight transport on domestic, international market and by transit via Bulgaria, as well as other activities specific to rail freight transport:

- transport logistics
- shunting of wagons, composition and decomposition of wagons, measurements of wagons
- small repairs of wagons

The company has a stable market position in Bulgaria, currently focus on improving the quality of transports service in challenging environment and future growing on the domestic market.



### Railway business with individual approach to each customer

Bulgarian Railway Company EAD uses electric, diesel-electric and diesel-hydraulic locomotives of various power, for train haulage on all line categories, as well as for wagon shunting.

Transports are performed in wagons, owned by BRC or by our customer. We choose the most suitable type of wagons for the specific type of carried goods.

The company headquarters is situated in the capital of Bulgaria, Sofia. We also have several work points in Varna, Burgas, Gorna Oryahovitsa, Ruse and Plovdiv.

### International Railway Organizations

Bulgarian Railway Company is a member of:

- **CIT** - International Rail Transport Committee
- **UIC** - International Union of Railways
- **GCU (AVV)** - General Contract of Use for Wagons
- **FTE** - Forum Train Europe

### History

Bulgarian Railway Company EAD was founded in 2004 and acquire railway license in 2006 as the first private railway carrier in Bulgaria. During the year the company has become one of the most important private rail freight operator in the country with significant operations in international transport.

Bulgarian Railway Company EAD has concluded Border and Additional Agreements to GCU for usage of wagons with railway operators from Turkey, Serbia, Romania, Slovenia, Slovakia, Croatia and North Macedonia and Greece.

### Certifications and authorizations

- National License for rail freight transport, with European status since 2007
- Certified according to ISO 9001:2015
- Safety Certificate part A and B, issued by the Executive Agency Railway Administration, Sofia
- Entity in charge of maintenance certificate (ECM)





## 02 Train Hungary



Train Hungary, member of GRAMPET Group, provides railway freight transport and forwarding services throughout Hungary.

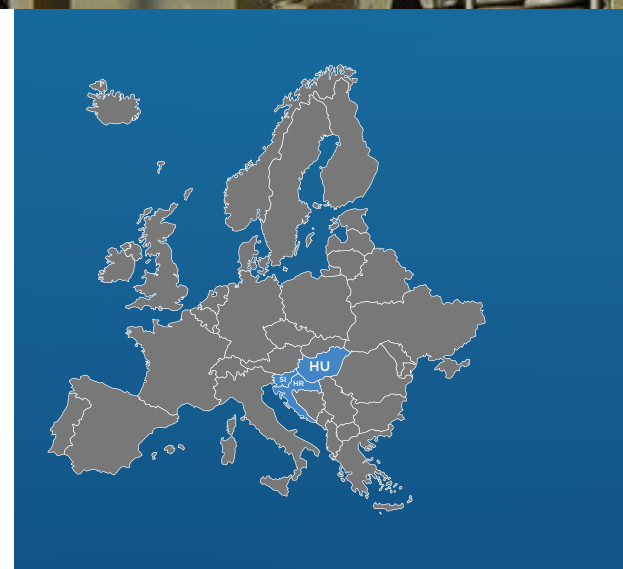
Train Hungary is one of the largest private rail freight operators in Hungary, mainly due to its leading position in transports for infrastructure works and crushed stone. Its current fleet includes more than 24 locomotives and over 1.000 wagons.

Train Hungary, branch office Zagreb from 2016, is able to offer rail transport in Croatia. Train Hungary, with branch office in Zagreb, and soon in Slovenia, will move goods by rail from East to West, from North to South. Trains guarantee on-schedule, cost-optimized transport for all sorts of freight categories.

Train Hungary successfully meets all freight transport requirements, whether conventional or combined traffic, domestic or transit traffic. Due to the mother company's support and to its collaboration with railway operators from the neighboring countries, Train Hungary provides a full range of services to its customers.

### Services

- Railway transport for regular or irregular block trains
- Block train composition with corresponding wagons and railway traction on the entire route
- Shunting in private shunting stations or industrial stations
- Traction and shunting within railway construction works
- Train and wagon group composition in the region of Zahony, towards and from CIS countries
- Freight handling between standard gauges and large gauges
- Cost coverage as first contractor railway operator, regarding international block trains



- Customs clearance
- Road traction, in addition to rail transport
- Conducting large transports of coal, iron, cereals and petroleum products



### History

Train Hungary was established in 2005 in Debrecen and first operations began in January 2006. The company is headquartered in Budapest and is majority-owned by GRAMPET Group.

Since 2016, Train Hungary has been able to offer rail transport in Croatia, having a branch office in Zagreb. In 2018, negotiation steps are done for Train Hungary new branch office in Slovenia.

### Technical support

The rolling stock fleet of Train Hungary includes:

- 18 electric locomotives of 51 00 kW
- 6 diesel-electric locomotives of 2100 HP
- Over 1000 wagons (Eakkmos, Uagps, Eacs etc.)

### Certifications and authorizations

- MSZ EN ISO 14001: 2005 (ISO 14001: 2004) Environment Management System
- MSZ EN ISO 9001 :2009 (ISO 9001: 2008) Quality Management System

### Railway organizations

Train Hungary is a member of:

- Hungarian Freight Transport Association - HUNGRAIL
- Forum Train Europe
- Rail Net Europe (RNE)





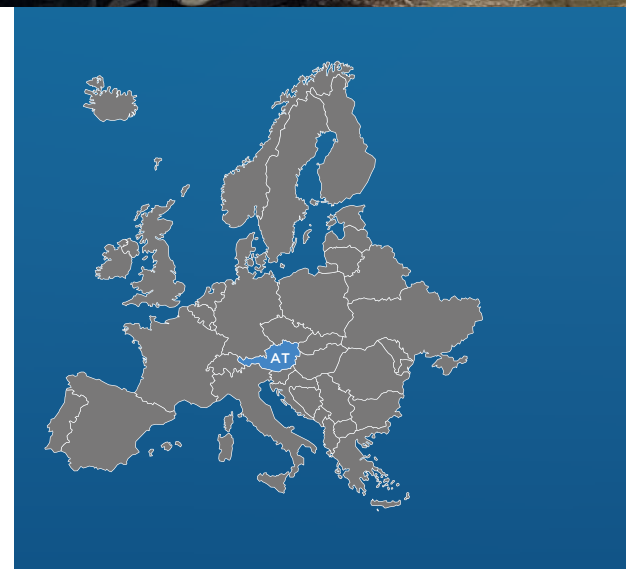
## 02 GRAMPET Cargo Austria



GRAMPET Cargo Austria is one of the youngest companies of GRAMPET Group. Working together with the mother company, we offer expert services in railway logistics in Central and South-Eastern Europe.

The company offers complete solutions in railway logistics and rail freight, as our experts offer premium advice and support to customers.

Under the direct management of the mother company, GRAMPET Cargo Austria guarantees smooth and quality decisions, to the ultimate benefit of the customer.



### | Services

GRAMPET Cargo Austria provides:

- Complete railway logistics services solutions
- Supply of freight wagons
- Load tracking
- Logistics consultancy
- Consultancy for optimizing combined modes of transport
- Consultancy for minimizing the "CO2" footprint
- Railway logistics consultancy
- Complete solutions for business and network - specific SCEM (Supply Chain Event Management)

We are an innovation-based company. Our customers testify that we are the perfect solution for partnerships regarding supply chain management, with state-of-the-art technology.

We are a customer oriented company. We dedicate our efforts and energy to being a real partner for customers and solving their problems.

Due to our close collaboration with the other railway transport companies within GRAMPET Group, such as those in Romania, Hungary or Bulgaria, we can offer our customers an excellent price-quality ratio.

### | Customers

The company targets Top 100 Austria customers from different fields of activity, but also international railway transport companies.

### | History

GRAMPET Cargo Austria, established in April 2012, is a company of the GRAMPET Group.



## 02 Eurorail Serbia



Eurorail Serbia is the most recent railway operator within GRAMPET Group. It has acquired its transport license as private operator on the territory of Serbia in 2013. It currently has a towing capacity of electric locomotives (441 and 461 series), diesel-electric locomotives (2100 hp) and diesel-hydraulic locomotives (1250 hp).

The company commenced operating railway transports since the end of 2017, after obtaining all authorizations in terms of regulations from the Serbian State authorities.

Eurorail Serbia has active partnerships with private and state railway operators from all the neighboring countries, based on which it can deliver complete logistic solutions in the entire Balkan region.



### | International railway affiliations

UIC - International Union of Railways

CIT - International Rail Transport Committee

### | Services provided

As it has all the necessary resources at its disposal, Eurorail Serbia guarantees its clients individualized service packages, according to the strictest requirements, and at the same time aiming to increase efficiency and to reduce costs:

- Domestic and international railway freight transport
- Wagons shunting on private industrial platforms
- Customs clearance
- Logistics support





## 02 GRAMPET Rail Cargo



GRAMPET Rail Cargo is a commercial entity with full Romanian capital, having GRAMPET as major shareholder.

### Certifications and authorizations

GRAMPET Rail Cargo is certified by the Romanian Railway Authority – AFER with Safety Certificate (CSA RO1120180008 and CSB RO1220180023 from 15.03.2018) for rolling stock (locomotives and wagons) used for the traffic departments where it performs transportation.

GRAMPET Rail Cargo has closed a contract of access on public infrastructure with CN CFR

GRAMPET Rail Cargo is certified and maintains an integrated quality, environment, health and occupational security management system, as specified ISO 9001:2015, ISO 14001:2015 and OHSAS 18001:2008.

GRAMPET Rail Cargo is certified and maintains a Management System for Railway Safety in conformity with the European Union regulation act number 1158/2010.

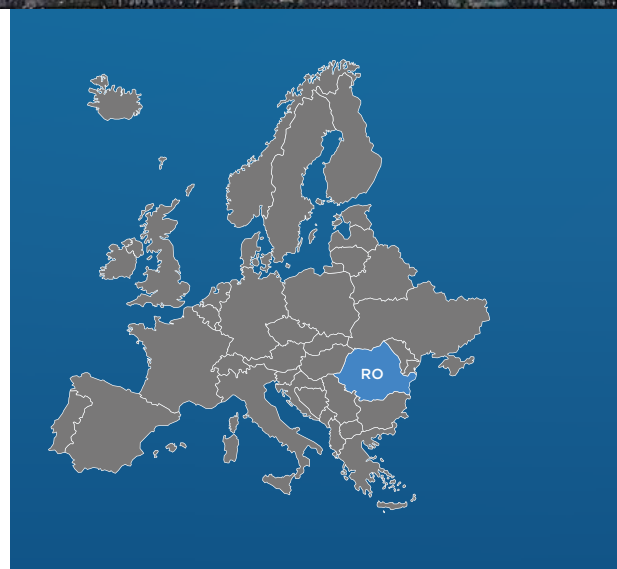
GRAMPET Rail Cargo is certified and holds a freight wagons maintenance system in conformity with the European Union regulation act number 445/2011.

GRAMPET Rail Cargo is registered as an Entity Responsible with the Maintenance of wagons (ERM) for the wagons it operates and holds the ability of being ERM for other companies' wagons (upon request).

GRAMPET Rail Cargo can perform railway transport on approximately 80% of Romanian railway.

### Certifications and authorizations

- Railway Merchandise Operator
- Industrial Maneuver Operator
- Freight Wagons Maintenance And Repairs
- Entity Responsible For Maintenance Of Freight Wagons



### History

GRAMPET Rail Cargo started its activity in January 2002 (as Servtrans Invest SA) and functions under the authority of the Ministry of Transportation of Romania, being licensed as Railway Transport Operator (Transport license no 21/23.11.2017).

For carrying out the transportation and industrial maneuvering operations, GRAMPET Rail Cargo owns and operates 65 locomotives and 901 freight wagons:

- LE - 5100 KW
- LE - 3400 KW
- LDE- 2100 CP
- LDE- 1250 CP
- LDHc - 1250 CP
- LDH 25 - 250 CP



GRAMPET Rail Cargo carries out freight and rail maneuvering in the Constanța Railway Complex.

To ensure the logistics and management of the necessary resources, GRAMPET Rail Cargo has set up a working point at CF Palas station.

Freight wagon maintenance activity takes place at the Caracal working Point.







## 02 Logistică Feroviară

Logistică Feroviară is one of the key companies of GRAMPET Group, focused on shunting and transports operations.

Logistică Feroviară conducts its operations in full compliance with environment standards, in order to preserve the quality of the natural parameters, using eco-friendly equipment which observes European standards.

The company's environment footprint is low, as emissions are in accordance with the Conformity Program of environment regulations.

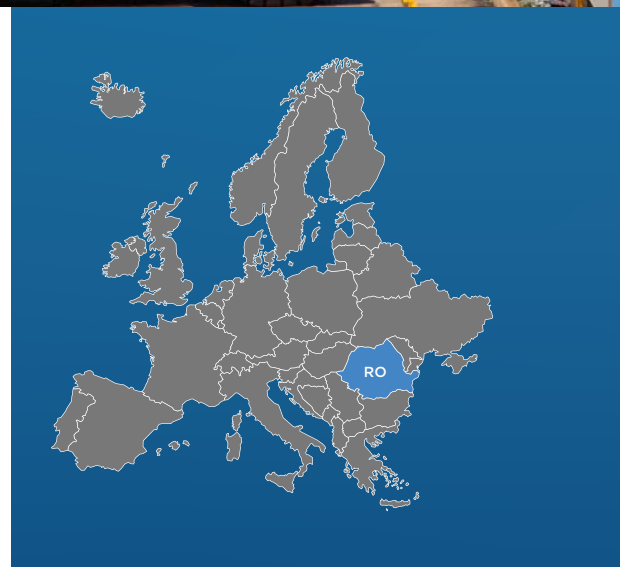
### Activity

Applying the policy of small steps during the 6 years of existence on the Romanian railway market, starting from two related activities - transport and shunting - the company has grown, both on a professional and commercial level.

The companies' attention is permanently directed towards the following objectives:

- Providing a complex service package;
- Adapt the service offer to the client's needs and characteristics;
- Expanding the range of services based on the economic context on local, regional and national level;
- Establishing a balanced report of cost/quality.

The activity of railway maneuver has started with a number of a few thousands of wagons shunted in 2016 reaching about 40,000 wagons shunted in 2017. Currently the company is shunting more than 120,000 wagons annually.



From the point of view of the personnel the company detains technical specialists in transports, logistics, advisers in dangerous merchandise, responsables in traffic safety, etc., ascertained by the Romanian Railway Authority AFER.



### History

Logistică Feroviară was established in 2015 at the initiative of two partners.

For the railway shunting to be performed in secure rail transport conditions according to the requirements imposed by the railway regulations in force, Logistică Feroviară can assure the maintenance, the mending of the industrial railway line, and wagons and locomotives. For this type of activity the company has specialized personnel and is ascertained by the Romanian Railway Authority AFER.

### Certifications and authorizations

- License for providing rail freight services
- SR EN ISO 9001: 2015 - Certificate for the implementation of the Quality Management System
- SR EN ISO 14001: 2015 - Certificate for the implementation of the Environmental Management System
- SR OHSAS 45001: 2018 - Certificate for the implementation of the Work Health and Security Management System





## 03 GRAMPET Logistics



The company is collaborating with International transport operators and members from the network developed by GRAMPET Group.

GRAMPET Logistics is able to provide transport offers from all over Europe, but also Asia, so that it can provide the highest quality standards to their customers.

GRAMPET Logistics easily approaches complex models of freight expedition, integrating in the logistic chains different modes of transport and auxiliary services, to relief the customer of the burden of tasks that are not related to his object of activity.

All these services, based on the principle of sole interlocutor, are made available to the customers in a form perfectly adaptable to their requirements, from the elaboration and explanation of the offer to the supply in a real time of the reports regarding the stage of the supplied activities.

### Services

- National and international freight transports
- Technical and commercial logistics in the freight transfer points, between lines of different gauges
- Door to door transport of high capacity containers and other goods, regardless of the type of packaging
- Customs duty services in the frontier stations
- Transport tracking service
- Operational reports regarding the ongoing transports
- Special services for the valuable goods insurance
- Railway consultancy
- Integrated transport solutions



## 03 GRAMPET Intermodal



GP Intermodal, member of GRAMPET Group, is the youngest company in the group offering logistics services.

The main activity of the company is the loading and unloading of goods in/from cars and in/from wagons, goods management services, transshipment of goods and transfer of petroleum products from 1520 mm gauge railway wagons to 1435 mm gauge railway wagons and the other way around, in Romania's state borders stations with the former CSI states.

GP Intermodal is providing the extended services for freight handling and storage on logistics platforms or in warehouses and intermediate activities of transport services, for diversified general goods and for dangerous petroleum products.

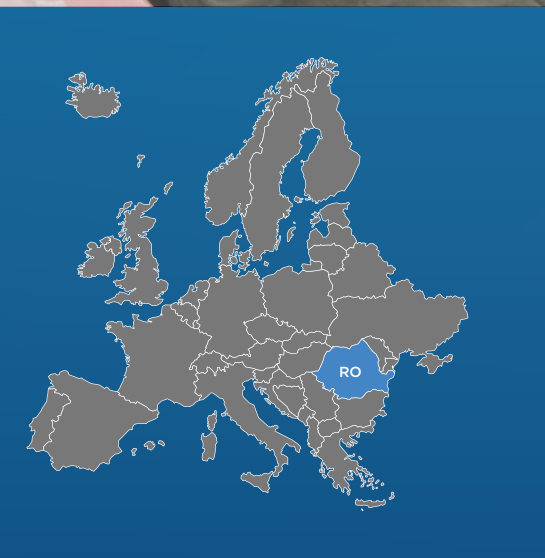
### Services

- Transshipment of freight from 1520 mm gauge wagons to 1435 mm gauge wagons and the other way around
- Loading/unloading into/from vehicles
- Loading/unloading on site or in warehouses
- Handling, organization and assurance of goods in wagons and road vehicles
- Storage services of goods
- Lease of field, set up spaces, intermodal transport units (high capacity containers), lifting and transport equipment

### Technical support

GP Intermodal owns lifting and transportation equipment:

- 12.5 tf and 20 tf portal cranes
- 20 tf and 60 tf railway frame cranes
- 2 to 6 tf forklifts
- 32 tf transtainer crane
- mechanical shovels
- hydraulic lifting equipment



The equipment allows handling of various goods, regardless of their presentation for transport and packaging.

All the activities are performed in accordance with international quality standards.

GP Intermodal is headquartered in Bucharest, GP Intermodal Bucharest Terminal - located on the ring road of the Capital connected to the Chitila railway network.

GP Intermodal and has another 4 working locations with strategic positions in important border points of Romania:

- Terminal GP Intermodal Galati - Galati county
- Terminal GP Intermodal Cristești Jijia -Iasi county (corresponding border Ungheni station Republic of Moldova )
- Terminal GP Intermodal Dornești - Suceava county (corresponding border station Vadu Siret)
- Terminal GP Intermodal Halmeu - Satu Mare county (corresponding border station Diakovo)



## 03 GRAMPET Forwarding Companies



The company capitalizes on the European operators and transport management network developed by GRAMPET Forwarding Companies, while implementing strategic cooperation with non-group partners and emphasizing collaboration with national railway freight operators.

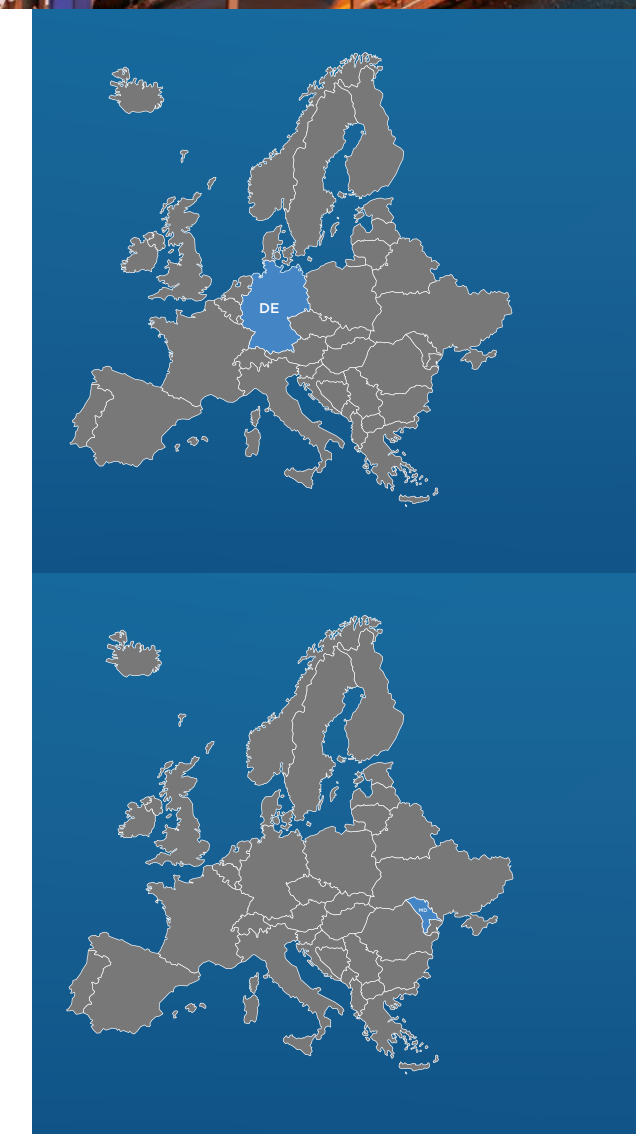
GRAMPET Forwarding Companies brings a new competitive alternative to its customers, by offering prompt transport services both in Europe, as well as in non-European countries.

GRAMPET Forwarding Companies easily approaches complex models of freight expedition, integrating different modes of transport and auxiliary services in the logistic chains, to relieve the customer of the burden of tasks which are not related to their core activity.

Each forwarding company is committed to providing flexible and viable logistics solutions, tailored to the needs of its customers, while focusing on its primary goal - to identify the ideal transport solution, which best suits the customers request.

### | Eurorail Logistics Germany

Eurorail Logistics GmbH is a forwarding company based in Frankfurt, Germany. It specializes in delivering complete and individual, custom-made logistics solutions for Central and Eastern Europe, in order to fulfill the most demanding requests of its customers. Among the most important products Eurorail Logistics GmbH has transported on railways are: metal products & coal, mineral oil, cereals, different automotive and intermodal transports, etc.



### | Eurorail Logistics Moldova

Freight Forwarding Company Eurorail Company Moldova, member of GRAMPET Grup, was founded in 2010 and represents the interest of GRAMPET Group in the Republic of Moldova, identifying complete logistic solutions being in permanent connection with our partners in other countries we are present in. Eurorail Company Moldova organizes railway transports in Moldova, Romania, different countries across Europe, the CIS space, Baltic Countries and Asia.

### | History

Although conducting expedition activities through its different departments, GRAMPET identified the enormous growth potential of having in its portfolio an independent Forwarding Company which could identify profitable and complex transport solutions in order to diversify its portfolio of clients and improve the market share on this sector.

Thus, each company from GRAMPET Group began making a name on the market of freight forwarding, attracting new clients, organizing competitive and efficient transports and fulfilling the most complex needs of its customers.

### | Forwarding Companies

Forwarding companies within GRAMPET Group valorize the potential, the coverage area and the experience of railway transport and logistics operators within the group.

The forwarding companies are informed about the railway offers from all over Europe, but also Asia, so that they can provide the highest quality standards to their customers.

### | Services

- Domestic and international railway freight transport
- Technical and commercial logistics in the freight transfer points, between lines of different gauges
- Door to door transport of high capacity containers and other goods, regardless of the type of packaging
- Customs duty services in the frontier stations
- Transport tracking service
- Operational reports regarding the ongoing transports
- Special services for the valuable goods insurance
- Railway consultancy
- Integrated transport solutions



All these services are based on the principle of the one-stop-shop and are made available to the customers in a form perfectly adaptable to their requirements, from the drafting and explanation of the offer to the real-time delivery of the status reports.

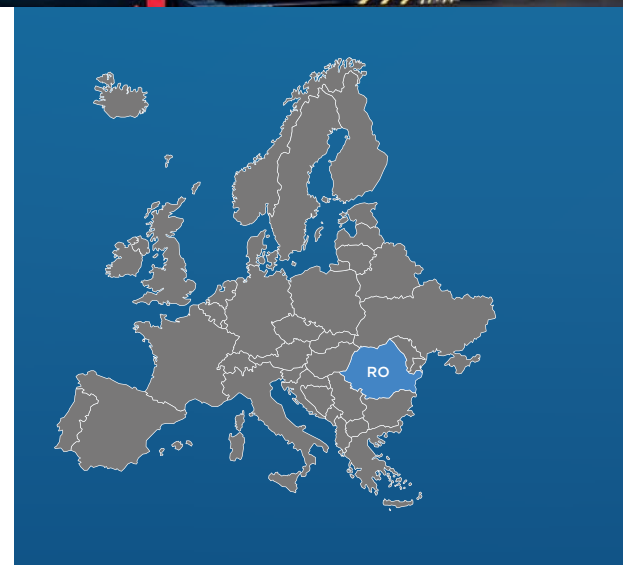


## 03 Rolling Stock Company



Rolling Stock Company, member of GRAMPET Group, is specialized in wagon and locomotive leasing in Romania and also in Central and South-Eastern Europe.

Due to the quality of its services, Rolling Stock Company has consolidated its position on the rolling stock lease market in Central and South-Eastern Europe and it has extended its collaboration with railway companies, forwarding companies and authorized operators of freight rail transport.



### Technical support

Rolling Stock Company offers customers the following types of locomotives and wagons:

#### Locomotives

Electric and diesel-electric locomotives are used for the haulage of heavy freight trains and shunting services in railway and shunting stations. The locomotives are fully equipped to increase their feasibility:

- Electric locomotives LE 5100 Kw
- Diesel-electric locomotives LDE 2100 HP

#### Wagons

The wagons are fit for the transport of several types of goods, under conditions of maximum safety.

- Tank wagons for the transport of petro-chemical products, Zas, Zaes series
- Open wagons for the transport of bulk products, Eaos series
- Open wagons for the transport of containers, palletized goods, Rgs series
- Specialized wagons for the transport of cereals, Uagps series
- Specialized, open, auto-discharging wagons for the transport of coal, Fals series

• Covered wagon with broadened doorways, allowing access to half of the loading area of the wagon. There is a partition in the middle of the wagon. Applicable for: furniture, goods on palettes, single pieces of goods, various shapes, Habis series

Rolling Stock Company is committed to continuously improve the quality of its services and also to observe environmental and operational health and safety conditions (SSO).



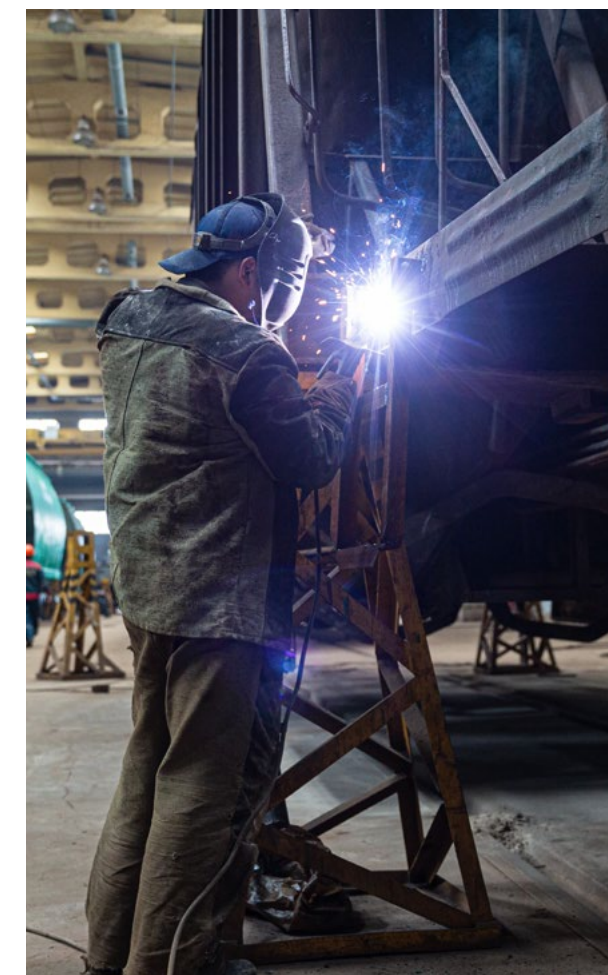
### History

Founded in 2007, Rolling Stock Company is a joint venture of Romanian investors. Its shareholders are two of the most important companies on the Romanian rail transport market: Grup Feroviar Român, member of GRAMPET Group, and "Societatea Națională de Transport Feroviar de Marfă "CFR Marfă" (the state owned rail freight transport company).

### Certifications and authorizations

In order to provide further guarantees for its customers, Rolling Stock became, in 2008, a member of CGU (General Contract for Use of Wagons) and UIC (International Union of Railways).

The quality of company management is confirmed by the certificate regarding the implementation and the maintenance of an integrated quality management system, issued by the certification organization TÜV Austria, at the beginning of 2009.



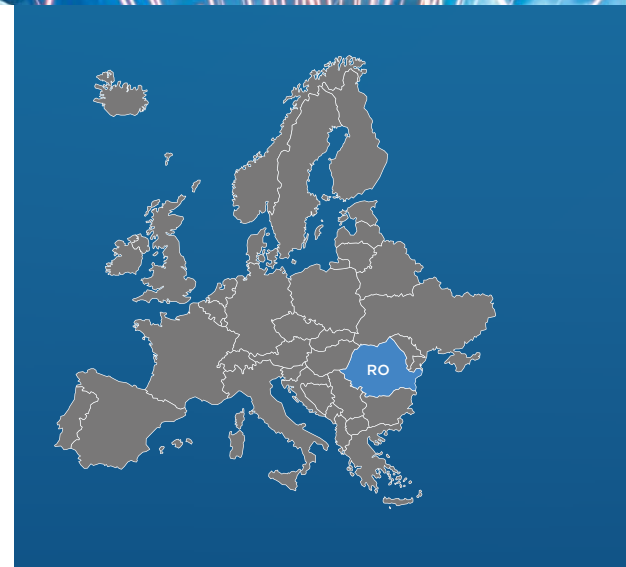


## 04 Electroputere VFU Pașcani



With tradition and experience of more than 150 years, ELECTROPUTERE VFU Pașcani, member of GRAMPET Group, is one of the largest Romanian companies specialized in manufacturing, modernization and maintenance of passenger and freight railway vehicles.

The company has distinguished itself on the local and foreign markets through development and implementation of its own modernization concept called R&R ("Redesigned and Rebuilt"). This process can be applied to used railway vehicles (passenger coaches, Diesel Multiple Units, trams), and the final configuration guarantees performance similar to new ones, at significantly lower costs. Furthermore, the company provides customers an integrated package of services: consultancy, know-how, design, manufacture, testing, first start, staff training, warranty and post warranty, complex services and turn-key projects.



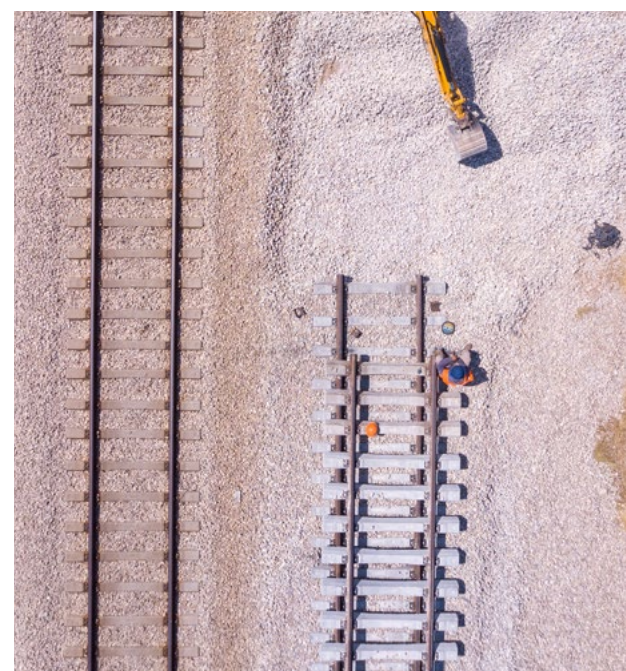
### Services and products competence

The product strategy of ELECTROPUTERE VFU Pașcani is oriented on a complete circle of competences:

- Manufacturing railway vehicles: projects for passenger Coaches (saloon coach - maximum speed: 160 Km/h; sleeping car 1st and 2nd class - maximum speed: 200 Km/h); EMU with 3 or 4 modules - maximum speed: 160 Km/h; DMU with 2 or 3 modules - maximum speed: 120 Km/h; freight wagons.
- Modernization of railway vehicles: The R&R process is a proven solution, integrated by ELECTROPUTERE VFU PAȘCANI in more than 10 projects for passenger coaches (saloon coaches, double deck coaches and trains, compartment cars), 1 project for a Diesel Multiple Unit and 2 projects for a trams. The company had delivered more than 300 modernized vehicles, to clients from: Romania, the Moldavian Republic, Congo and Belgium.
- Passenger and freight railway vehicles maintenance according to EU Directive no. 2004/49/CE;
- Spare parts, subassemblies and assemblies for the rolling stock and related industries.

### Certifications and authorizations

Electroputere VFU Pașcani has an integrated management System, which includes: SR EN ISO 9001: 2015, SR EN ISO 14001: 2015, SR OHSAS: 2008. Certificate for welding of railway vehicles and components according to EN 15085-2, Certificates for the maintenance function, railway supplier authorization for rolling stock spare parts.



### History

The largest plant of the rail industry in Romania, Atelierele CFR Pașcani, was established in 1869. Between 1936 and 1938, the company grew due to the construction of new halls and an electric plant. In 1969, it underwent a massive specialization process due to the development of the local market.

In 1992, Remar becomes a commercial company under state ownership and it was privatized in 2004, when the majority stake was bought by Grup Feroviar Român. In 2013, it was renamed ELECTROPUTERE VFU Pașcani due to the new development strategy.

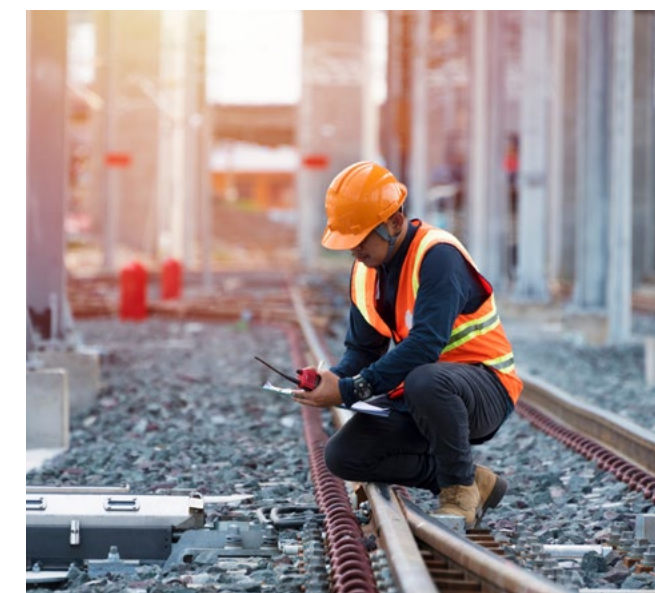
### Capability

ELECTROPUTERE VFU Pașcani implemented an Investment project of more than 30 million Euros in technology, know-how and human resources. The most important technical competences of the company are:

- Specialized cutting line (Trumpf Laser installation for thin sheets, Oxytome cutting installation for thick sheets, Kasto CNC Saws);
- Specialized primer and sand blasting cabin for profiles, plates, spare parts, customized sandblasting installation, painting and drying cabin for car bodies and bogies;
- Specialized technological line for mechanical metal works (OkumaCNC lathes machinery, vertical CNC milling centers Okuma, roller CNC machinery for tubes and pipes);
- Special line for primary suspension - coil and sheet springs;
- Specialized line for axles and wheels (Okuma CNC lathe machines, heating ovens);
- Customized workshop for manufacturing and assembling of motorized and trailer bogies (Okuma CNC vertical center, Fanuc welding robot, specialized testing tooling);
- Customized workshops for car body welding - subassemblies and assemblies (Kawasaki welding robot, special tooling);
- Assembly line for medium-to-heavy welded structures;
- Specialized workshop for commissioning of railway vehicles with variable gauge;

• Specialized measuring and control equipment (Mitutoyo CNC measuring machine, under loading bogie testing tooling, CNC equipment for spring pressing tests, nondestructive testing equipment, equipment with magnetic powder for cracks testing axels and wheels Karl Deutsch);

• Dedicated laboratories for physical and mechanical testing.





## 04 Reva SA Simeria



With a tradition of more than 145 years, Reva SA Simeria, member of GRAMPET Group, is one of the largest Romanian companies in the field of freight rolling stock manufacture, repair and upgrade.

Reva Simeria is specialized in:

- Casting and melting: cast iron, steel, low alloy steel, alloy steel
- Tank wagons repair and containers maintenance
- Tank and freight wagons manufacture, repair and maintenance.

### Services provided

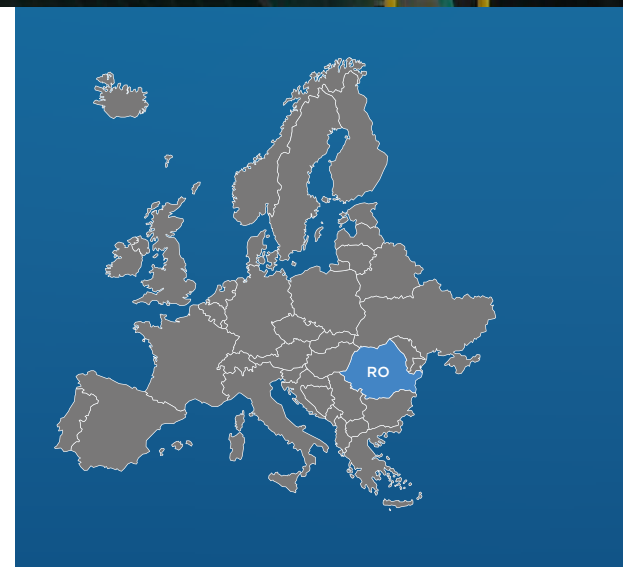
- Reva SA is a manufacturer of freight wagons:

4-axle tank wagon, Zacs/Zacns type, with a total capacity of 85 m<sup>3</sup>, intended for the transport of light petroleum products, class 3 RID (petrol, diesel, mineral oil), as well as other products corresponding to tank code L4 BH;

Sgmmnss 40 flat wagon for container transport, country 1 6.5 t, transport capacity 73.5 t, Y25 Lss1K type bogies, Knorr-Bremse braking equipment;

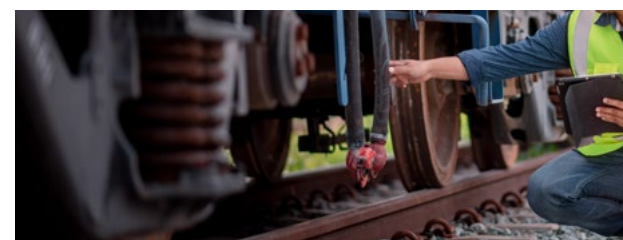
Eanos series wagon, this four-axle box wagon is suitable for transportation of aggregate, gravel. The wagon design meets the requirements of TSI, EN, UIC standards and has TEN GE marking for traffic operation.

- Design, manufacture, repair and upgrade of railway wagons
- Manufacture and reconditioning of spare parts for railway rolling stock
- Manufacture of stands, installations for civil and industrial constructions, SDVs, forged and molded pieces, accessories for machine tools, oxygen bottling
- Production of large series cast iron for: brake block shoes, counter-weights, caps gears, gear housings



### Specific services

- Maintenance and repairs of freight wagons series: F, T, U, R, K, E, S, L, H
- Revisions and repairs of tank wagons series Z, tests of tank, calibrations
- Upgrade of wagons series E, L, F
- All revisions according VPI rules
- Repair (IS2) and reconstruction of wheel sets (IS3) according to VPI
- Thread reshaping consistent V-R-G, according SNCF
- Repairs of components (buffers, springs, brakes, etc.)
- Inside cleaning of tank wagons transporting white products
- Maintenance with mobile workshop



### History

Established in 1869, Reva is located in Simeria, a city in the Western part of Romania, known as an important railway junction point. In 1992, Reva Simeria became a commercial company under state ownership. It was privatized in an auction in 2001 when the majority stake was acquired by GRAMPET Group.

### Technical support

The company has specific units and workshops, assembly units, sanding stations, dyeing and drying stations, forge and arching workshops, mechanic processing, tool houses, chemical testing laboratory, metrological laboratory, nondestructive testing laboratory, as well as technological performance testing laboratory.

### Customers

The main internal customers are Grup Feroviar Român, Rolling Stock Company, Alro Slatina, Holcim Romania, Tim Rail Cargo. REVA has executed and has ongoing contracts with more than 20 external customers from Germany, Austria, Poland, France, Switzerland, Hungary, Serbia, Czech Republic, Bulgaria, Slovakia, Slovenia, Montenegro and Republic of Macedonia.

### Certifications and authorizations

- STATUTE (EU) Nr.445/2011 Certificate for maintenance functions ECM - 1436 - SCONRAIL Switzerland
- SR EN ISO 9001: 2015 Quality Management System Certificate - Bucharest AFER
- SR OHSAS 45001:2018 Occupational Health and Safety Management Certificate - Bucharest AFER
- DIN EN 15085-2 Klasse CL1 Certificate for welding procedures applied in the construction and repair of freight wagons and their assemblies - TÜV SUD Munchen
- EN 14025 - Certificate of manufacturer of containers for tank wagons according EN 14025, RID 6.8.2.1.23 and EN 3834 - 2 - TÜV SUD Munchen
- RID 6.8.2.1.23 License to perform welding works at containers of tank wagons for dangerous goods - EISENBAHN - BUNDESAMT ZENTRALE

• SR EN ISO 9712-2013 Certificates operators END ( UT, PT, MT,VT) - ISIM TIMISOARA and AFER BUCHAREST

• SR EN ISO 17025 Nondestructive Testing Laboratory Certificate - RENAR Bucharest

• DIN 27201-7 Certification CND - Werkstoff - Service GmbH Essen

• VPI DB SCHENKER REVA Authorization - 874 for wagons, axles and components revision

• SR EN ISO 9001:2008 Certificate of Quality Management System - AFER Bucharest History

• AL 538/2015 Quality Control Laboratory Certification AFER Bucharest

• AF 6980/2016 Authorization for casting iron and steel for wagons AFER Bucharest





# 04 GRAMPET Debreceni Vagongyár



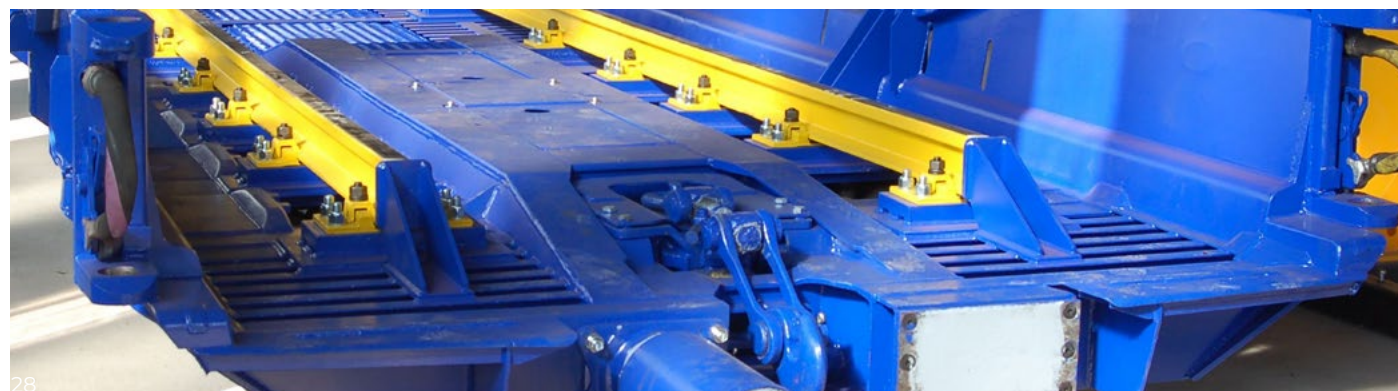
GRAMPET Debreceni Vagongyár, member of GRAMPET Group, is specialized in freight wagon repair and manufacture, which have been its core activities for more than a century.

GRAMPET Debreceni Vagongyár is the domestic market leader for the repair of wagons for gas transport, and it is one of the leading plants in Europe for the repair of freight and tank wagons. The company has a rich experience in the repair and upgrade of tanks, with and without thermal insulation. GRAMPET Debreceni Vagongyár carries out overhaul, repair and upgrade for more than 2400 freight and tank wagons per year.



## Services

- Freight wagon repair and maintenance
- Tank wagon revision and maintenance
- Freight wagon manufacture
- Wagon reconstruction and upgrade
- Manufacture and repair of spare parts
- Repair of mounted axles, replacement of mono-block wheels and axles (IS2 and IS3)
- Fabrication of welded metal body-work
- Inside and outside cleaning of tank wagons that transport black and white goods



## History

GRAMPET Debreceni Vagongyár has a tradition of more than 120 years in the field of freight wagon repair and fabrication.

During all these years, it has acquired an extensive experience and it is recognized as one of the important companies on the Hungarian market. The plant was privatized in 2009 and the majority shareholder is GRAMPET Group.

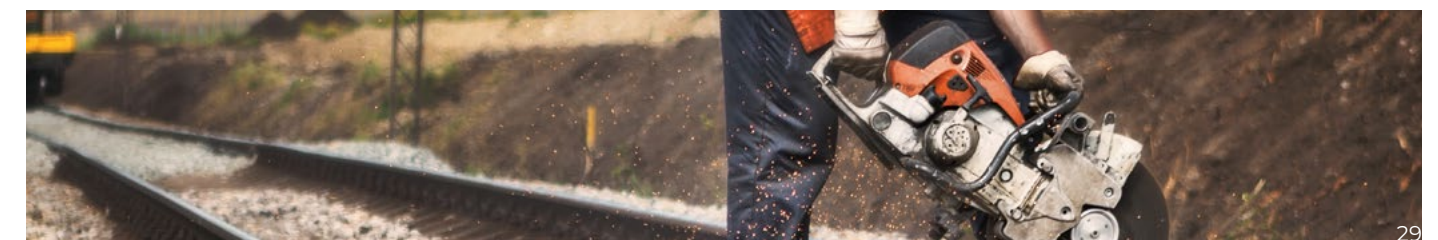
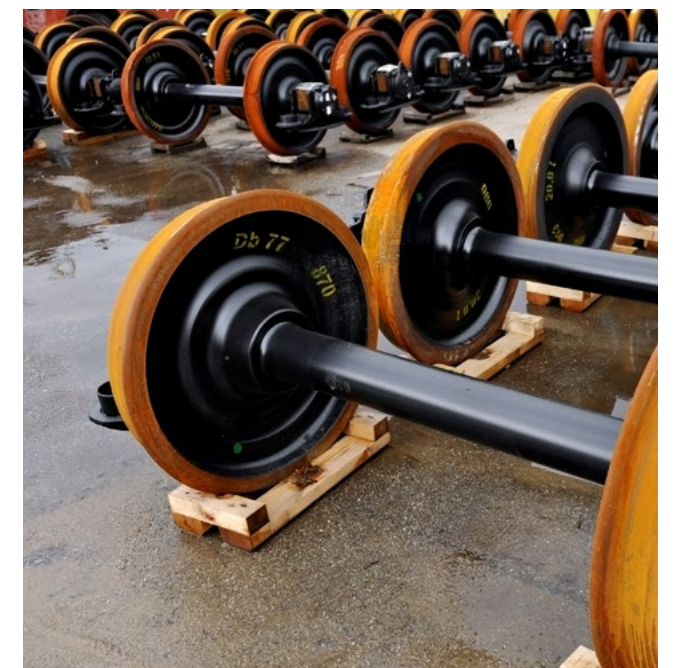
## Customers

GRAMPET Debreceni Vagongyár works especially for the external market and its customers are companies from Germany, Austria, France, Romania, Switzerland or Slovakia. An important factor in the company's development is its highly qualified staff, as well as the equipment and technical facilities that ensure quality improvement and rapid customer service. GRAMPET Debrecen Wagon Factory is customer-oriented and flexible in its approach to meet customer needs, while maintaining high quality standards.



## Certifications and authorizations

- ISO 9001: 2015 - Certificate for the introduction and use of Quality Management System
- VPI Authorization - Execution of overhaul and maintenance for wagons subject to VPI provisions
- ECM – Maintenance Functions Certificate
- DIN EN 27201-7- Certificate for NDT
- DIN EN ISO 3834-2 - Certificate of conformity for welding workshops
- EN 15085-2 - Certificate for welding procedures applied for freight wagon construction and repair, including subassemblies
- EN 14025 (RID §6.8.2.1.23) - Licence for manufacture and repair of wagon reservoirs
- RCH Authorization - Execution of overhaul and maintenance for private and own freight wagons inscribed in the RCH wagon fleet
- AFER Authorization - Overhaul and maintenance of wagons inscribed in the Romanian rail fleet







# 04 Reloc Craiova

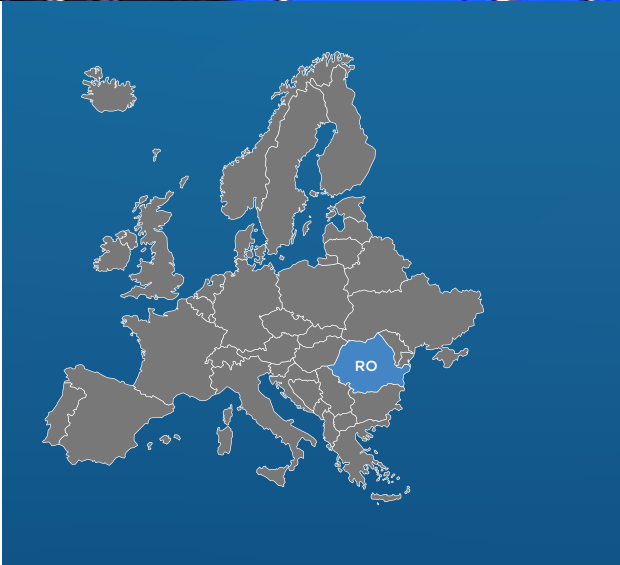
Since 1968, RELOC continues the tradition of the Romanian industry in designing and manufacturing railway vehicles, representing the most important company in Southeastern Europe in the sector of designing, manufacturing, repairing and modernization of rolling stock and being one of the leading providers of rail vehicles. The main purpose of the company's activity consists of construction, design, re-building, modernizations and repair of railway vehicles as well as the manufacturing of the spare parts for these products.

RELOC has an experience of over 60 years regarding repair and modernization of railway vehicles, both for Romanian and external customers. The existing technological capabilities are constantly developed and carefully controlled, thus assuring RELOC a technological level that can answer the market requests. Since 2016, RELOC joined the elite of European rail manufacturing industry, by becoming a member of UNIFE. We are determined to keep locomotives on tracks with dedication, pride, safety and stability as we have done for decades.

In 2012, RELOC and Electroputere VFU Craiova were taken over by GRAMPET Group. In 2013, we revived the engineering design sector at RELOC and also the manufacturing operations of new railway vehicles (new Diesel-hydraulic locomotive of 1260 HP). RELOC built the best alternative to traditional locomotives: the railroad shunting machine, equipped with the latest technology in the field. At the end of the year 2016, RELOC also started the bearings production activity. In its facility in Resita, RELOC strengthens the tradition of bearing manufacturing, which are used in the manufacturing of Diesel engines, Sulzer and Maybach engines and in the manufacturing of ALCO type engines. RELOC has designed and built, for the first time, a modern overhead-line maintenance railcar, according to European standards. The power group uses a Diesel engine and an automatic gearbox that provides a maximum speed of 70 km/h in both directions.

## Services

RELOC offers services for the maintenance, repair and upgrade of electric, Diesel-electric and Diesel-hydraulic locomotives, railcars and railway cranes. In addition, the company provides critical products and/or railway services, as engineering design and manufacturing of rolling stock and/or manufacturing and repairing of spare parts and components for rolling stock.



## Technical Support

RELOC owns different facilities and specific workshops with modern equipment necessary for the locomotive repairs and modernization. However, the company is equipped with more than 70 stands, certified by The Romanian Railway Authority, which provide the possibility to test the components in real conditions of functioning for the locomotive, according to international standards, perfectly ensuring the development of the company. RELOC also has a laboratory for physical, chemical and mechanical tests, approved by the Romanian Railway Authority.

Over the years, thousands of vehicles have been repaired or modernized in the company's production halls. By modernizing rail vehicles, the company makes an economic alternative to purchasing new vehicles. The expertise and high qualification of its staff, credentials and years of experience from numerous modernization and repair projects, were and will be the main basis for starting other future projects.

## New projects

Our newest project presents the transformation of a 700 HP Diesel-hydraulic locomotive into a Diesel-electric locomotive with A.C.-A.C. transmission. The 700 HP Diesel-electric locomotive covers from the technical point of view the needs for shunting and operation (train haul), being able to replace the Diesel-hydraulic locomotive in respect of shunting.

## History

S.C. RELOC started to operate in 1968, by repairing Diesel-electric locomotives with 2100 HP output, reaching the maximum load of 31 RGE/month (equivalent general repairing) in 1983.

- Re-motorization by transforming a 1250 HP Diesel-hydraulic locomotive into a 310kW electric locomotive.
- Design and construction of a 3000 HP Diesel-electric locomotive with 4 Volvo engines, three-phase asynchronous, with a speed of 120 km/h, usable for freight and passenger transportation.

Among our internal and foreign partners, it is worth mentioning:

Customers	Providers
• BDZ Patniceski, BDZ Tovarni from Bulgaria	• Volvo Penta
• AD Montecargo, ZPCG AD from Montenegro	• Electro-Motive Diesel
• Srbija Kargo from Serbia	• Babacan Rubber
• S.N.T.F.C “CFR Călători”	• Doraglass
• Conpet SA	• Knorr-Bremse
• CER-FERSPED	• Lucchini RS
• Tim Rail Cargo	• Wabtec
• Train Hungary	• Bonatrans Group Inc.
• Train Hungary Podružnica Zagreb	• Welter Zahnrad GMBH
• GRAMPET Cargo Austria	• Rotorcomp
• Bulgarian Railway Company (BRC)	• Juergensen
• Rolling Stock Company	
• Grup Feroviar	

## Certifications and authorizations

- SR EN ISO 9001: 2015
- SR EN ISO 14001: 2015
- SR EN ISO 45001: 2018
- EN ISO 9001: 2015
- EN ISO 14001: 2015
- EN ISO 45001: 2018
- Certificate of Conformity of Entity in Charge of Maintenance no.RO/31/0020/0033
- Certificate of Conformity for Maintenance Functions no.RO/32/0021/0004
- Certificate of Conformity for Maintenance Functions no.RO/33/0020/0035
- Railway transport license
- Single Safety Certificate
- Railway supplier authorization no. 7404



## 05 ITC



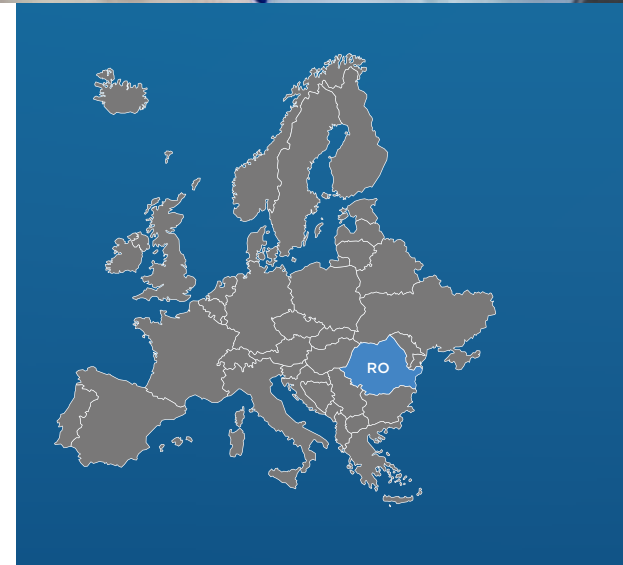
Shaping the Information Technology landscape for more than five decades and setting benchmarks in the industry, ITC - Institutul pentru Tehnic de Calcul, a member of GRAMPET Group, has become one of the most important IT providers in Romania, running projects that are recognized and appreciated by businesses, academics and scientists.

The company's portfolio of products and services includes:

- Business solutions- ERP, EAM, CRM, PLM/PDM, BI and Intranet solutions
- Integrated applications customized for sectors like Transport, Environment, Energy and Health
- On-demand software development in various technologies
- Hosting and housing services in owned data center
- Computer network management services
- Internet access provision

## IT products and services developed by ITC for the railway industry:

- Track View is a fleet tracking solution based on client specifications, performing a real-time vehicle monitoring using GPS and GSM/GPRS technologies. It provides comprehensive reports for an effective management, cost control and transport route optimization.
- Railway Orders is an online application for real-time railcar tracking, making available easy-to-use tools to customers and railway operators, leading to improved customer satisfaction and retention.
- Railway Personnel Command is an online railway human resource planning and personnel tracking solution: covering a diversity of assignments, such as train driving tasks, guard duty or personnel leisure time, thus, improving safety and productivity.
- Cost Expert is an application for rail freight transportation cost calculation, intertwining the current track geometry effects and calculation methods with a modern approach. It simplifies decision-making and improves cost assessment through flexible graphic scenarios.



• DMCC is a rail engine diesel consumption meter, measuring fuel consumption based on pressure, flow, temperature and engine rotational speed. The collected data can be downloaded locally or transferred in real time to a central database using a GPRS and a TMD-TP device to be analyzed. The device is approved by AFER (The Romanian Rail Authority).

• Tel Trackview is a locomotive fuel and energy consumption management tool, providing real-time consumption data and generating technical, commercial and managerial reports. By combining hardware, software and communication constituents, Tel Trackview improves energy efficiency and safety, and lowers energy consumption and operational costs.

• Relear is a customizable e-learning platform offering teaching, learning and assessment functionalities. With a friendly interface, multiple level access and rich content options, this e-learning solution is an effective educational tool for rail operators.

• STE - Electronic Consignment note is an online instrument for editing, managing and tracking consignment notes that accompany rail cars. This instrument provides consignment note templates, cargo status information, synthetic reports and archiving functionalities, thus rendering time, transparency and cost benefits to clients and rail operators.

• DM - Document Management is a web-based platform for document handling inside a rail company, displaying users, creating flows, sending notifications and showing statuses and resolutions. Based on a wealth of functionalities, this platform is user friendly, leading to swift document processing and an improved resource allocation.

## I History

Established in 1967 as a National Institute for Research and Development, ITC - Institutul pentru Tehnica de Calcul has marked important moments in the IT creation and development in Romania. In 2008, ITC became a member of GRAMPET Group.

• RTV is a mobile application for managing freight rail car overhaul defect assessment and repair process (an Infor ERP LN-based application). Being developed for PC tablets, RW leads to cost and time savings.

• Logistics ITC is an application for managing freight in custody by rail transporters (an Infor ERP LN-based application). Using this application, a rail transporter can diversify its portfolio, offering comprehensive and tailored services to its clients.

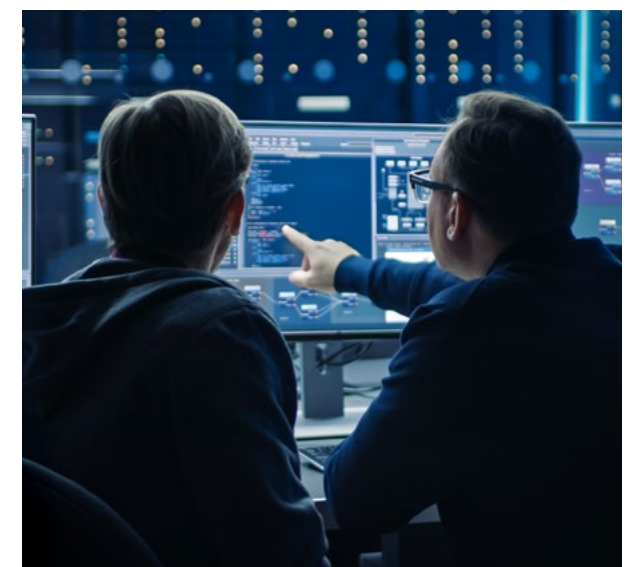
• CRM ITC is an application for expedition house activity management, matching shipping offers for clients with those of transporters (an Infor ERP LN-based application), prompting swift, reliable and targeted solutions.

## I Customers

ITC's customers are world class regional and national companies, not only in the railway industry, such as IBM, Michelin, Pirelli, Henry Coanda International Airport, Frigoglass, Vilmar, Biofarm, Napomar, Labormed, GKN Hoeganaes, Saint-Gobain Rigips, Greif, BADUC.

## I Certifications and authorizations

- ISO 9001:2015 - Quality Management; SR EN 14001:2015 - Environmental Management; SR EN 27001:2018- Information Security Management and SR ISO 45001:2018 - Occupational Health and Safety.
- Certification for "Railway supplier" issued by AFER- Romanian Railway Authority - allowing to provide equipment and services for monitoring and managing railway resources.
- Supplier of electronic communication services - ANCOM certification (National Authority for Management and Regulation in Communications of Romania).





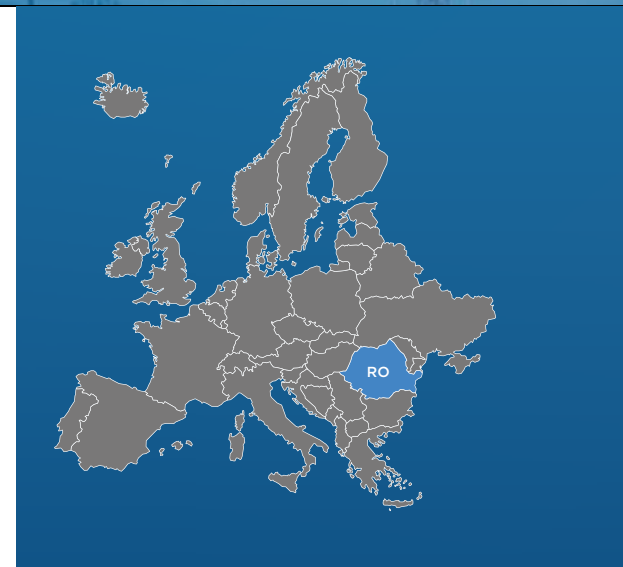


## 06 ROSERV Green Energy

We own the oil refining unit in Onești (former RAFO) where we started an investment program for the conversion of this large industrial objective into a production and services unit for the market energy products in Romania.

Our refinery, one of four of Romania's largest refineries (former Rafo Onești) with an installed capacity of 3.5 million tons/year of crude oil, it is located in the north-east of Romania, near to the border to Moldova and Ukraine. Refinery is situated on the petrochemical industrial platform of Onești town, since '80 was the one of the largest petrochemical complex in the Eastern Europe.

In recent years the refinery has been temporarily closed to carry out the refurbishment investment program. The current and promising conditions of the oil refining industry for fuel production have led us to initiate an investment program to refurbish the refining unit in the direction of renewable energy production, hydrogen, biofuels and ethers.



### ROSERV GREEN ENERGY - location, neighboring areas & infrastructure

The facility is about 3 km from Onești, Bacău County. Onești City is situated at an average altitude of 210 m, in the eastern location, neighborhoods and infrastructure part of Romania, in a depression from the confluence of the Trotuș - Oituz - Tazlău - Cașin rivers, in the Eastern Carpathian Mountains. The population of the city is 53,000 inhabitants, and the city also serves the neighboring areas, reaching approx. 110,000 inhabitants.

The total area owned by ROSERV GREEN ENERGY is 295 ha. The facility is located on the Borzesti industrial site, on the right bank of the Trotus river with the next neighbors: North - the former Carom plant, South - Borzesti CET1 power plant, East - Trotus river, West - Industriilor Street.

We are interconnected to National Road's and National Railroad's, our RTCs network is 36 km.

The 400/220/110 kV Gutinaș electrical substation, located in the southern part of Onești municipality, represents one of the most important energy nodes in the National Energy System (SEN) and is the main "energy gate" of Moldova.



Onești Gas Compression Station, including the Onești Technological Node, with an installed capacity of 9.14 MW, 2 compressors of 4.57 MW each, one active and one spare.

ROSERV GREEN ENERGY is interconnected with both facility: Gutinaș electrical substation (SEN) and Onești Gas Compression Station.

### PROJECTS

ROSERV GREEN ENERGY aims to organize the largest logistics center in the region of Moldova, and to transform a traditional oil refinery into a green energy supplier and a biofuel production unit.

#### PROJECT I - LOGISTIC TERMINAL

FUEL TRANSFER CAPACITY – 300.000 tons / month of fuel

#### PROJECT II - MTBE UNIT

CAPACITY – 50.000 tons / year

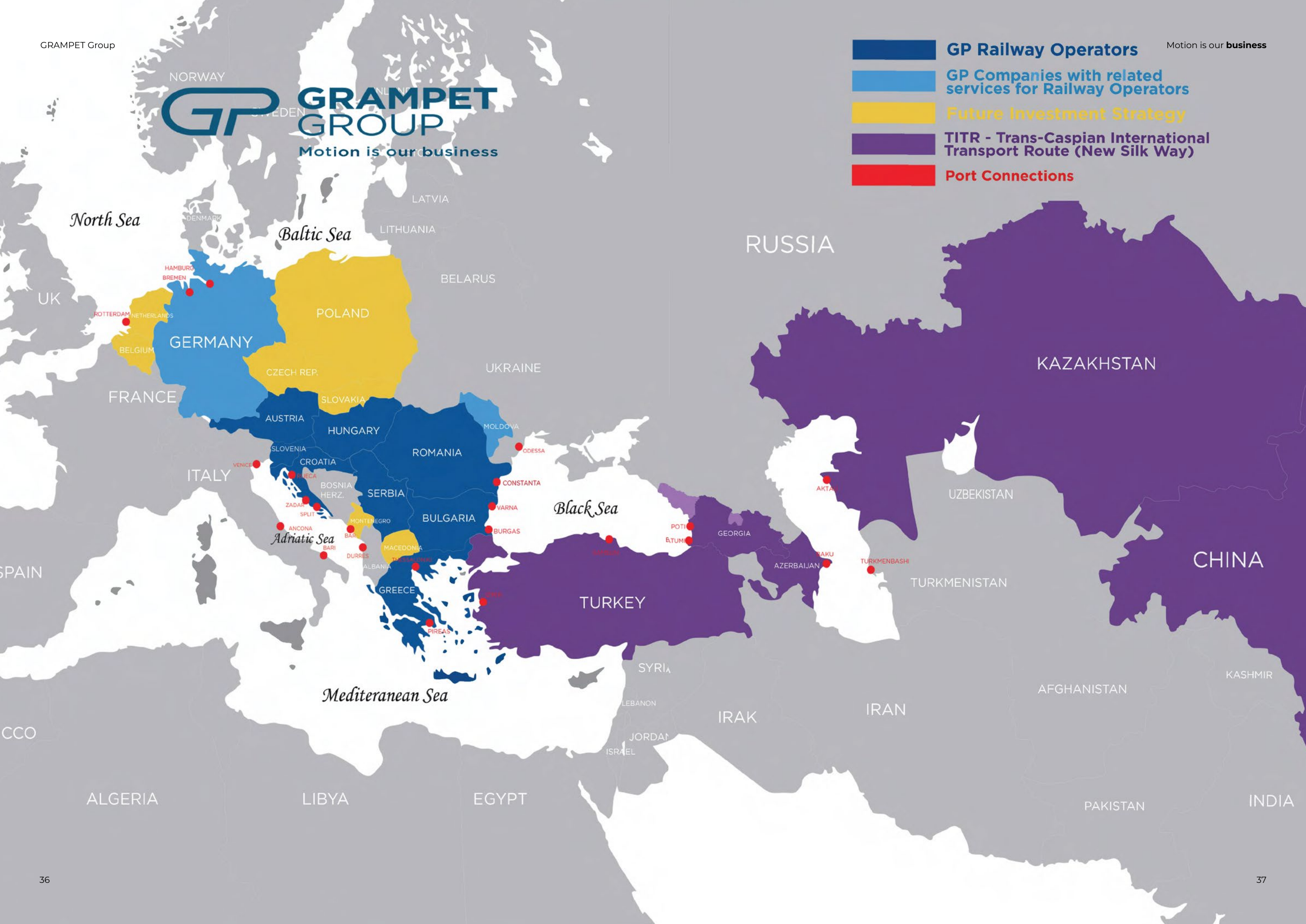
#### PROJECT III - BIOETHANOL

GENERATION II BIOETHANOL PRODUCTION UNIT - CAPACITY OF 50.000 tons / year





- GP Railway Operators**
  - GP Companies with related services for Railway Operators**
  - Future Investment Strategy**
  - TITR - Trans-Caspian International Transport Route (New Silk Way)**
  - Port Connections**
- Motion is our **business**





**GRAMPET Group**

114 Calea Victoriei, District 1, 010092,  
Bucharest, Romania

Phone: +40 21 317 30 90

Fax: +40 2131730 91

office@GRAMPET.ro

www.GRAMPET.ro

**Grup Feroviar Roman**

11 A Fabrica de Glucoza street, District 2,  
Room B01 Bucharest, Romania

Phone: + 40 21 318 30 90

Fax: + 40 2131830 91

office@gfr.ro

www.gfr.ro

**Bulgarian Railway Company**

1527 Sofia, Bulgaria 9, Chamkoria str., floor 2/3

Phone: +359 2 920 22 06

Fax: +359 2 920 22 06

office@brc-bg.ro

www.brc-bg.com

**Train Hungary**

12-14, Kbnyves Kalman krt., H-1097  
Budapest, Hungary

Phone: +36-1-210-8339

Fax: +36-1-210-8339

trainhungry@trainhungary.hu

www.trainhungary.hu

**GRAMPET Cargo Austria**

10 Ignaz-Kock-Str., Top 4111, 1210 Vienna

Phone: 0664/5498763

office@GRAMPET Cargo.at

**Eurorail Logistics Serbia**

Kralja Milana, No. 15

Belgrade, Serbia

Phone: +381 113 340 460

office@eurorail.rs

www.eurorail.rs

**GRAMPET Rail Cargo**

11 A Fabrica de Glucoza street, District 2,  
Room B01 Bucharest, Romania

Phone: +40 21 223 64 18/19

Fax: +40 21 222 33 46

office@gprailcargo.ro

www.gprailcargo.ro

**GRAMPET Logistics**

167 Calea Floreasca District 1  
Bucharest Romania

Phone: 0372 336 024

Fax: 0374 093 215

office@gpintermodal.ro

www.gpintermodal.ro

**GRAMPET Intermodal**

167 Calea Floreasca District 1  
Bucharest Romania

Phone: 0372 336 024

Fax: 0374 093 215

office@gpintermodal.ro

www.gpintermodal.ro

**Eurorail Logistics Germany**

Große Friedberger Straße 30

D-60313 Frankfurt am Main

Tel.: +49-(0)69-913 97 897

Mobile: +49-(0)173 324 7268

www.er-log.de

**Logistică Feroviară**

11A Fabrica de Glucoza Street, Ground Floor, Room P008  
2nd District, Bucharest, Romania

Phone: (+40)31.405.29.25

Fax: (+40)31.405.29.26; (+40)374.092.524

office@logisticaferoviara.ro

**Electroputere VFU Pașcani**

Pașcani, 18 Gării Street, 705200, Iași, Romania

Phone: +40 232 71 83 00

Fax: +40 232 76 51 40

office@electroputerevf.ro

www.electroputerevf.ro

**Reva Simeria**

32 Atelierelor Street, 335900 Simeria,  
Hunedoara, Romania

Phone: +40 254 260 164

Fax: +40 254 262 050

office@revasimeria.ro

www.revasimeria.ro

**Eurorail Company Moldova**

Str. Petricani, No. 88/1, et. 3, oficiu 9  
Chisinau, Rep. Moldova

Telephone: +373 22 878 269

E-mail: office@eurorail.md

www.eurorail.md

**Rolling Stock Company**

11 A Fabrica de Glucoză Street, District 2, 2nd Floor  
Room E201, 020331, Bucharest, Romania

Phone: +40 2123210 00

Fax: +40 21 232 10 02

office@rsco.ro

www.rsco.ro

**GRAMPET Debrecen Vgongyar Kft.**

H-4034 Debrecen, Hét vezér u. 24/B,  
Magyarország

Phone: +36 52 889 110

Fax: +36 52 889 199

info@vagongyar.hu

www.vagongyar.hu

**Reloc Craiova**

109,Decebal Boulevard, Craiova 200746,  
Dolj County,Romania

Phone: +40.251.438.754

Fax: +40.251.437.854

office@relocsa.ro

www.relocsa.ro

**ITC**

167 Calea Floreasca, District 1, 014459,  
Bucharest, Romania

Phone:+40 21 232 14 32

Fax: +40 21 233 09 66; +40 21 232 04 68

office@itc.ro

www.itc.ro

**ROSERV GREEN ENERGY**

10 București Nord Road, O2 Building, floor 5,  
Global Business Park, Bucharest, Romania

Phone: +4 0372 336 523

office@roserv.ro

www.roserv.ro





114 Calea Victoriei, District 1, 010092,  
Bucharest, Romania

Phone: +40 21 317 30 90

Fax: +40 2131730 91

[office@GRAMPET.ro](mailto:office@GRAMPET.ro)

[www.GRAMPET.ro](http://www.GRAMPET.ro)

Motion is our **business**

**GP** **GRAMPET**  
**GROUP**